

A woman with blonde hair in a bun, wearing a pink towel, stands in a shower. The background is a shower stall with a showerhead and glass panels. The scene is brightly lit, with water droplets visible in the air.

# Fit for modern living

START YOUR PEARL-WATER JOURNEY



# BWT PERLA SILK

*For you, your family  
and your home*

The BWT PERLA Silk has been designed to compliment today's busy lifestyles, and to deliver copious amounts of perfect softened water efficiently with very low levels of water and salt consumption. Luxurious silky BWT water is great for the whole family. Tough on scale and scum, kitchen and bathroom cleaning times are reduced, leaving more free time for you and family.

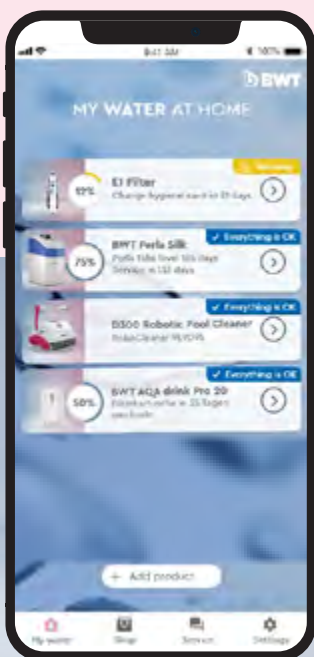
*Designed for  
modern living*

BWT Perla Silk changes hard, water into luxuriously silky soft pearl water - perfect for preserving that 'NEW LOOK' around the home.



*Europe's no. 1  
in water technology*

BWT is dedicated to water with the aim of becoming the global leader in water technology through eco-friendly, cost-effective products and processes. Wherever you are, in whatever sector, you'll find BWT's water treatment expertise – **you can see, taste, feel and smell the difference.** An entrepreneurial spirit, a passion for research, the joy of innovation and success – these are the factors that have made BWT the European market leader in the diverse water treatment sectors. **Visit [bwt.com](http://bwt.com)**



## *BWT Best Water Home*

...is more than the free App for your BWT Perla silk. It's your entry into the new era of customer satisfaction, your personal water consultant for countless BWT products and brings added value in terms of information, safety and comfort and a whole world of advantages await you. **Download now...**



**BWT Best Water Home**



Download on the  
**App Store**



ANDROID APP ON  
**Google play**



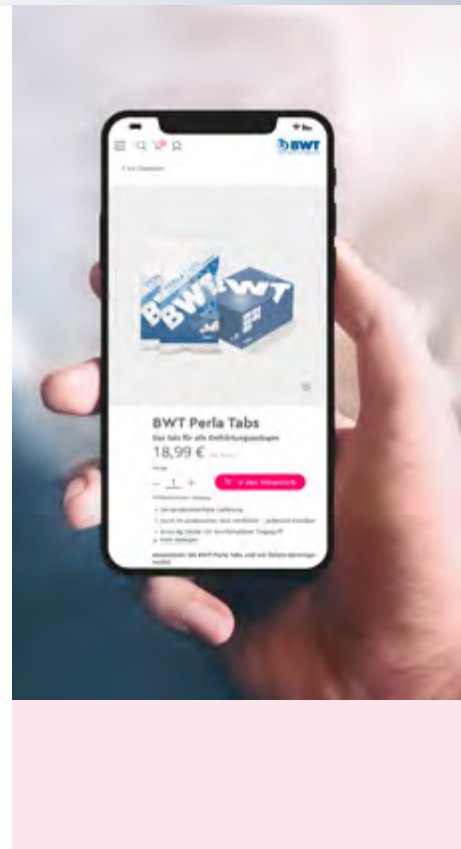


# SILKY SOFT PEARL WATER

## *... in the most convenient way*

Living with the BWT Perla Silk is easy. Operation is fully automatic. All you need to do is periodically top it up with salt. Fitted with a low salt reminder it will even tell you when you should check your salt levels. In addition the BWT Best Water Home App offers you the opportunity to have your salt shipped directly to the front door\*.

\*service and salt options country dependent





## Enjoy

Silky-soft BWT Pearl water is perfect for you and your home. It caresses the skin making it feel softer, hair feels shinier too. Soft water in the washing machine, helps suds wash away more easily leaving towels and clothes feeling softer.



## Protect

Silky soft BWT Pearl water reduces limescale deposits in the domestic water system and thus provides protection for your appliances, ceramics, glassware and shiny surfaces.



## Save

Silky soft BWT pearl water is kinder to the environment and your purse. Fewer limescale deposits in your appliances also mean less energy loss. Thanks to the soft water, your use of washing and cleaning agents as well as care products could be reduced by up to 50 percent.



# HIGHLIGHTS ON BOARD

BWT Perla silk comes with so much more than what you might expect. Wherever you have a detailed look – design, technology, safety, setup, operation etc – you will be amazed how much value you get for your money.



## Milestones to your pearl water journey



### DESIGN

BWT Perla Silk is smart well designed and impresses with its sleek, straightforward and clear style. In addition, its functionality and robustness should be emphasized. The compact housing with integrated display is completely sealed against dust to protect it's inner beauty that lies behind it's smart approach to delivering silky soft BWT Pearl Water.



### INTELLIGENT PREDICTIVE REGENERATION

Matching actual usage, lifestyle patterns and future demands allows the BWT Perla Silk to deliver an uninterrupted supply of softened water. Only regenerating when necessary it optimises the use of water and salt for maximum efficiency and real life running costs, making the BWT Perla Silk the perfect choice to meet the demands of the modern home.



### EASY SETUP

The simple symbol-based screen allows for straight forward communication in any language. The setup will be done in a **maximum of 3 steps** – setting the time, water-hardness and recharge time.



### BRINE CHECK VALVE FOR SAFETY - BIO CELL\* FOR HYGIENE PLUS

BWT Perla silk includes a brine well check valve, a smart way to help prevent over filling and delivering peace of mind to you. The same benefit will be offered by a the bio cell, that provides a hygiene plus by incorporating an automatic resin disinfection as part of every regeneration.



### INDEPENDENTLY TESTED AND EC COMPLIANT

Each individual material used in the construction of the BWT Perla Silk that comes in contact with the water is independently approved by WRAS in the UK. Each model is tested and fully compliant with the European norm 14743 for your peace of mind.



### BEST WATER HOME APP

So much more than an App – your personal water consultant for up to 30 BWT products and a whole world of benefits – discounts, warranties, extra services – for your Best Water Home.

\* Not all models have bio cell



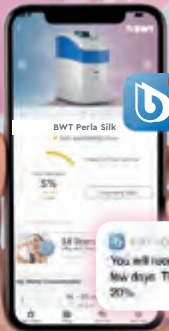
# BWT PERLA SILK OPTIONS

## Salt service

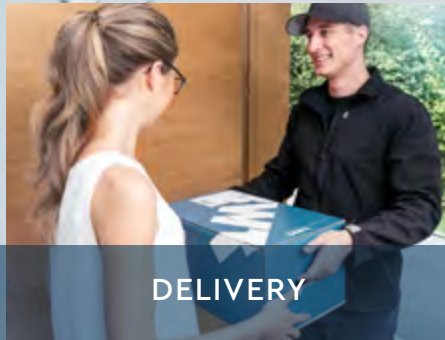
As one of many services the BWT Best Water Home App offers you the opportunity to order your salt online and have it shipped on a regular basis directly to the front door.

The ergonomically designed BWT Perla Tabs ,Easy Pack!\*' contain 2 × 10 kg bags of only the best quality evaporated salt (99,9% purity), packs can be ordered on line through your BWT account. Easy to order, Easy to deliver, Easy to top up

\*service and salt options country dependent



REMINDER



DELIVERY



SUBSCRIPTION

## Power options

For installations where there is no electric or the power supply is likely to be subject to interruption BWT Perla silk is available with



**BWT UPS (uninterruptable power supply):** Protection from power cuts with built in lithium ion battery (capacity up to 2 months softener use). Recharge loop and power bypass for use with BWT 12 volt power transformer. Alternatively there are 2 further options:

**BWT POWER BANK\*** – up to 6 months of softener use rechargeable for multiple use or a

**8 C-CELL DOMESTIC BATTERY SUPPLY\*** – up to 4 months independent operation without access to mains or battery charging facility

\* Does not to work with BWT Bio cell model



## More warranty – less maintenance

BWT Perla Silk is covered by the minimum of a two year warranty, that can be extended at the time of purchase through a range of BWT aftercare packages. A new service- and operation-concept has been implemented into the control and the BWT Best Water Home App: Easy startup can be done by anybody as long as they follow BWT's and relevant national guidelines



**6** BWT  
YEARS

**WARRANTY**

### HOW CAN I GET WARRANTY UNTIL 2026?

**If you want to operate your softener in line with European standards (compare: EN 806 – maintenance every 6 months) for perfect safety and hygiene, with BWT it's easy like never before.**

A personal water consultant is integrated into the Best Water Home App, who will enable you to refresh your BWT Perla silk with BWT Aquaclean and an easy do-it-yourself checklist within minutes. That's the way to extend expert maintenance intervals by a coefficient of FOUR. For the highest level of warranty, maximum service and corresponding peace of mind we offer 6 years BWT full warranty at reasonable cost.

#### HOW TO GET IT?

01

Have the installation checked or a commissioning call by BWT or a certified partner (may differ country by country)

02

Follow and confirm the half year checks in the App – you will be reminded on time and assisted by an easy step-by-step wizard

03

BWT expert service every 2 years: again there will be a reminder – call your service partner or national BWT service-organisation.

Note: BWT terms of warranty can be different from country to country

# MAKE HARD WATER SILKY SOFT

## How to install

BWT Perla Silk should be installed on your domestic water inlet directly down stream from the water meter and any protective water filter. Quickly converting hard water into silky soft BWT Pearl water by removing the hardness minerals that cause limescale. BWT Pearl water is carried around the home protecting bathrooms, en-suites, and kitchens from the damaging effects of limescale. Ceramics, sanitary ware, shower screens and taps all benefit from the 'softer touch' of BWT Pearl Water, helping them to sparkle and stay looking like new for longer. Appliances benefit too with no scale to build up and zap the energy from vulnerable heating elements, items like washing machines and dishwashers not only work more efficiently but last longer as well.



## BWT Perla silk – the right choice

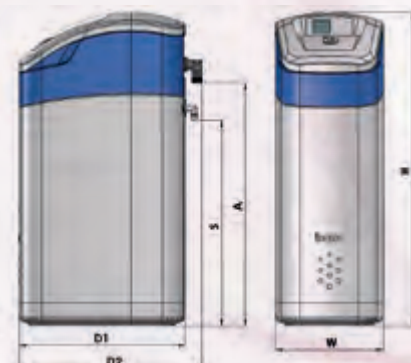
Model	S	M	L	XL
<b>FAMILY SIZE*</b> Based on average usage at 300ppm	up to 4 People	up to 6 People	up to 8 People	up to 10 People
<b>NOMINAL FLOW RATE</b> according to DIN EN 14743 at 1 bar pressure loss (kv value) (Note: not a design criterion)	1.44 m <sup>3</sup> /h 24 l/min	1.56 m <sup>3</sup> /h 26 l/min	1.68 m <sup>3</sup> /h 28 l/min	1.68 m <sup>3</sup> /h 28 l/min
<b>SALT CONSUMPTION</b> for 100 percent regeneration	1.5 kg	2.0 kg	2.5 kg	3.0 kg
<b>WATER CONSUMPTION</b> per 100 percent regeneration	85 l	105 l	125 l	145 l
<b>NOMINAL CAPACITY EN 14743</b> CaCO <sub>3</sub> mmol/l M3X°dH/mol/ppm	26/4.6/460	43/7.7/770	60/10.7/1070	75/13.4/1340
<b>CAPACITY SALT RESERVOIR</b>	12 kg	16 kg	24 kg	24 kg
<b>DIMENSIONS W x D2 x H (mm)</b>	276 X 470 X 526 mm	276 X 470 X 596 mm	276 X 470 X 803 mm	276 X 470 X 803 mm
<b>CONNECTION HEIGHT (A) / OVERFLOW HEIGHT (S)</b>	345 / 250 mm	415 / 320 mm	622 / 527 mm	622 / 527 mm



BWT PERLA SILK S



BWT PERLA SILK M



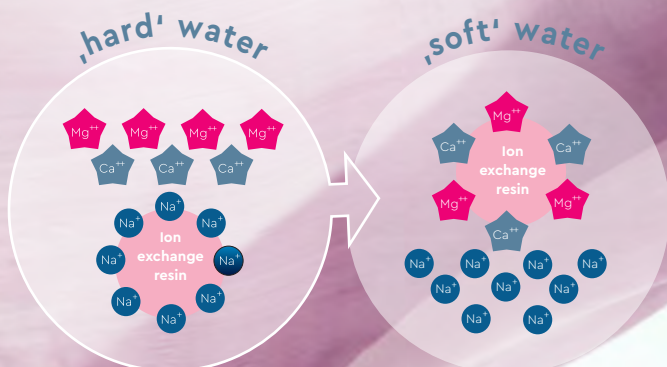
BWT PERLA SILK L/XL





## How it works

BWT Perla Silk works according to the **classical ion exchange method**. Hardness-forming substances are exchanged for sodium ions for making soft, lime-free water. Inside the so called column of the Perla silk there is a food quality granulate or resin that acts as an exchange material. While the hard, calcareous water flows through the resin, the unwanted components responsible for the hardness are bound to the resin. The thus obtained zero-grade water (0 ° fH or 0 ppm) can be blended with hard water to reach the individually desired level. Once the exchange material is exhausted, it is cleaned with a small amount of saline. This process of regeneration causes the hard-forming substances to be released from the resin and drained off with the rinsing water. The drinking water circuit is completely separated from your BWT water softener and is unaffected by the regeneration process.







**BWT UK Limited**

BWT House, The Gateway Centre,  
Coronation Road, High Wycombe,  
Buckinghamshire, HP12 3SU

☎ +44 1494 838100 📠 +44 1494 838101

✉ enquiries@bwt-uk.co.uk

*bwt-uk.co.uk*

FOR YOU AND PLANET BLUE.